

M.S.E. IN HIGH INCIDENCE DISABILITIES ONLINE MASTER'S PROGRAM*

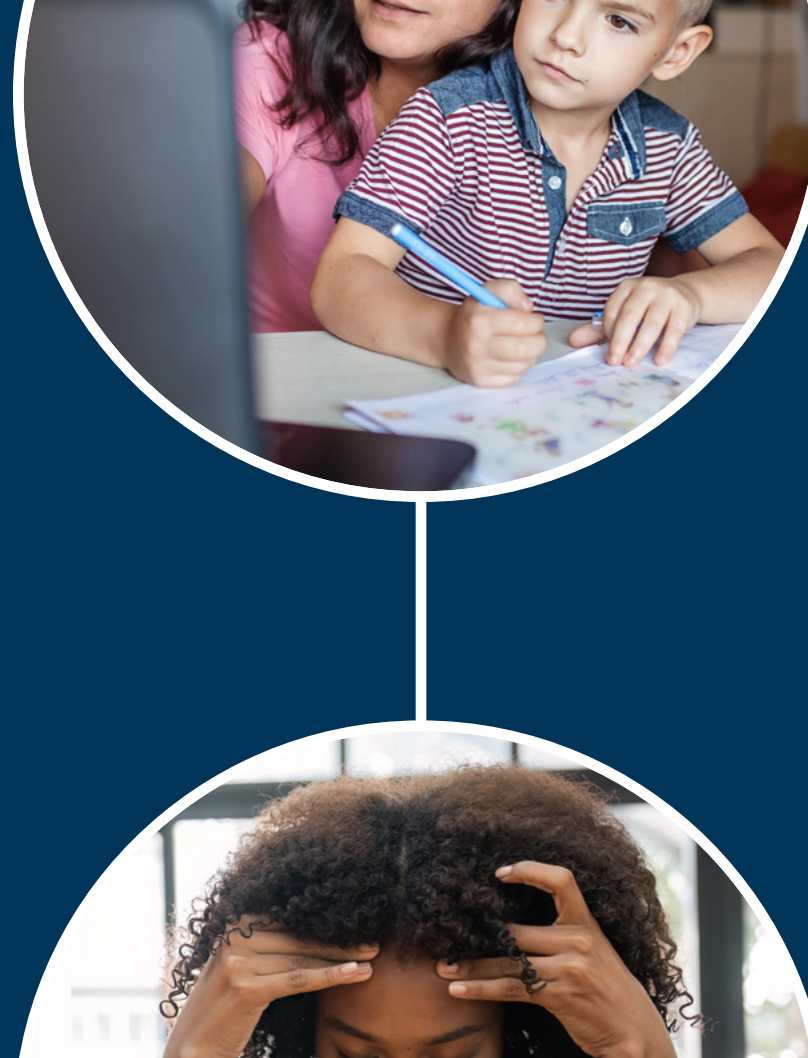
KU THE UNIVERSITY OF KANSAS

School of Education
& Human Sciences

SUMMER START COURSE SEQUENCE

YOUR PATH TO SUCCESS

This course roadmap illustrates the sequence of classes for the fastest progress given a summer program start and continuous enrollment. Read more complete descriptions of the courses in the drop-down menus on the [course description page](#).



SPED 854: Family and Interprofessional Collaboration in Special Education

SPECIAL EDUCATION: This course provides skills for implementing special education mandates, building relationships with families, and developing effective school programs for students with disabilities.



SPED 841: Advanced Methods and Assessment: Learning Strategies and Content Mastery for Struggling Learners and Students with High-Incidence Disabilities

SPECIAL EDUCATION: This course prepares students to work with school-aged students, especially those with mild disabilities, in general and special education classrooms for grades 4-12.



SPED 730: Characteristics, Methods & Assessment: Intro for Struggling Learners & Students with High-Incidence Disabilities

SPECIAL EDUCATION: The course is designed as an introduction to the characteristics, assessment and identification process, and initial instructional and behavioral interventions needed to meet the needs of students with high-incidence disabilities under the Kansas Adaptive Teacher Education Standards.

NATIONAL LEADERS IN SPECIAL EDUCATION

The University of Kansas' School of Education and Human Sciences is consistently ranked No. 1 in special education online master's programs. The programs are designed to prepare students for careers in teaching, research, and leadership, offering strong connections with national educational initiatives and networks.¹



SPED 741: Methods & Assessment: Literacy Interventions for Struggling Learners & Students with High-Incidence Disabilities

SPECIAL EDUCATION: This course focuses on advanced literacy instruction for students with special education needs, covering assessment tools within tiered support systems and evidence-based teaching strategies for reading and writing.



SPED 843: Advanced Methods & Assessment: Strategies for Students with Significant Behavior, Social & Emotional Needs

SPECIAL EDUCATION: This course introduces professionals in education and related fields to methods for preventing and addressing antisocial, aggressive, and behavioral issues in students.



SPED 775: Practicum with Children and Youth with Disabilities

SPECIAL EDUCATION: Intensive diverse and direct teaching experiences with children and youth with disabilities in educational settings.

KEY MILESTONE IN SPECIAL EDUCATION

Passed in 1975, the Individuals with Disabilities Education Act (IDEA) ensures that children with disabilities receive a free and appropriate education in the least restrictive environment.²



SPED 856: Transition Education and Services from Childhood through Adulthood

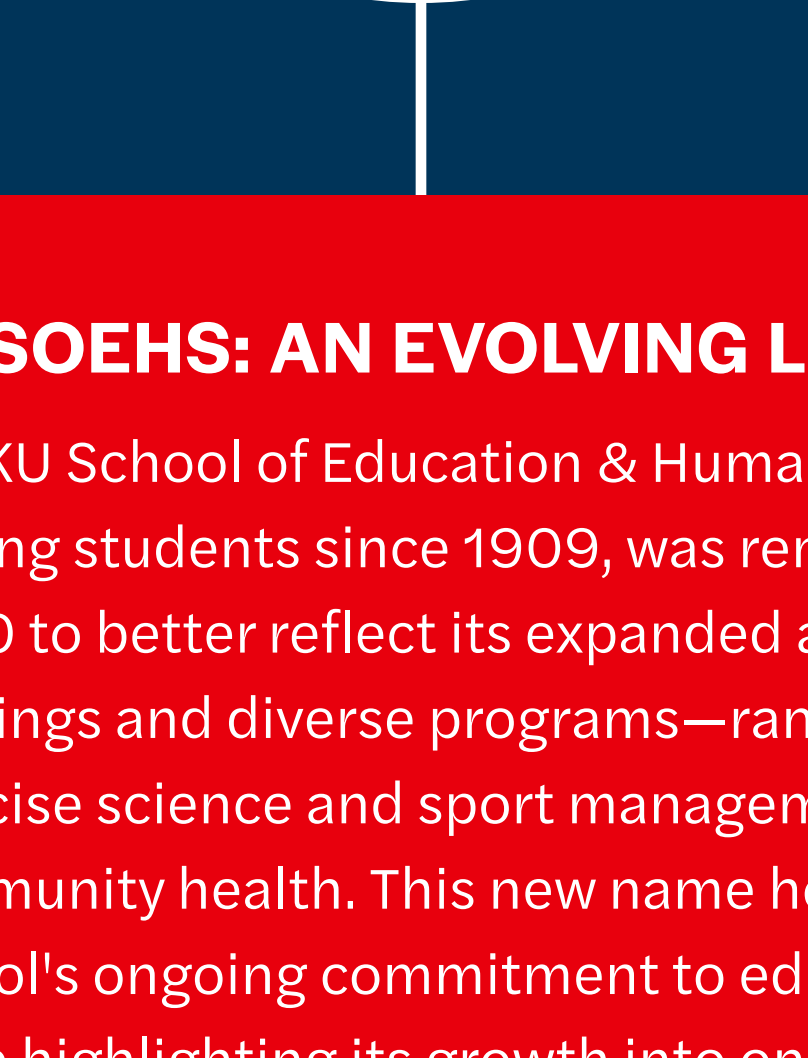
SPECIAL EDUCATION: The purpose of this course is to provide a foundation in career development and transition education for persons with disabilities from middle school through adulthood.



EPSY 715: Understanding Research in Education

EDUCATIONAL PSYCHOLOGY: This course introduces key concepts and skills for analyzing educational research, covering basic research methodologies such as quantitative and qualitative methods and historical and descriptive research.

PLEASE NOTE: This course fulfills the requirement of a research methods course in the first 12 hours of graduate study.

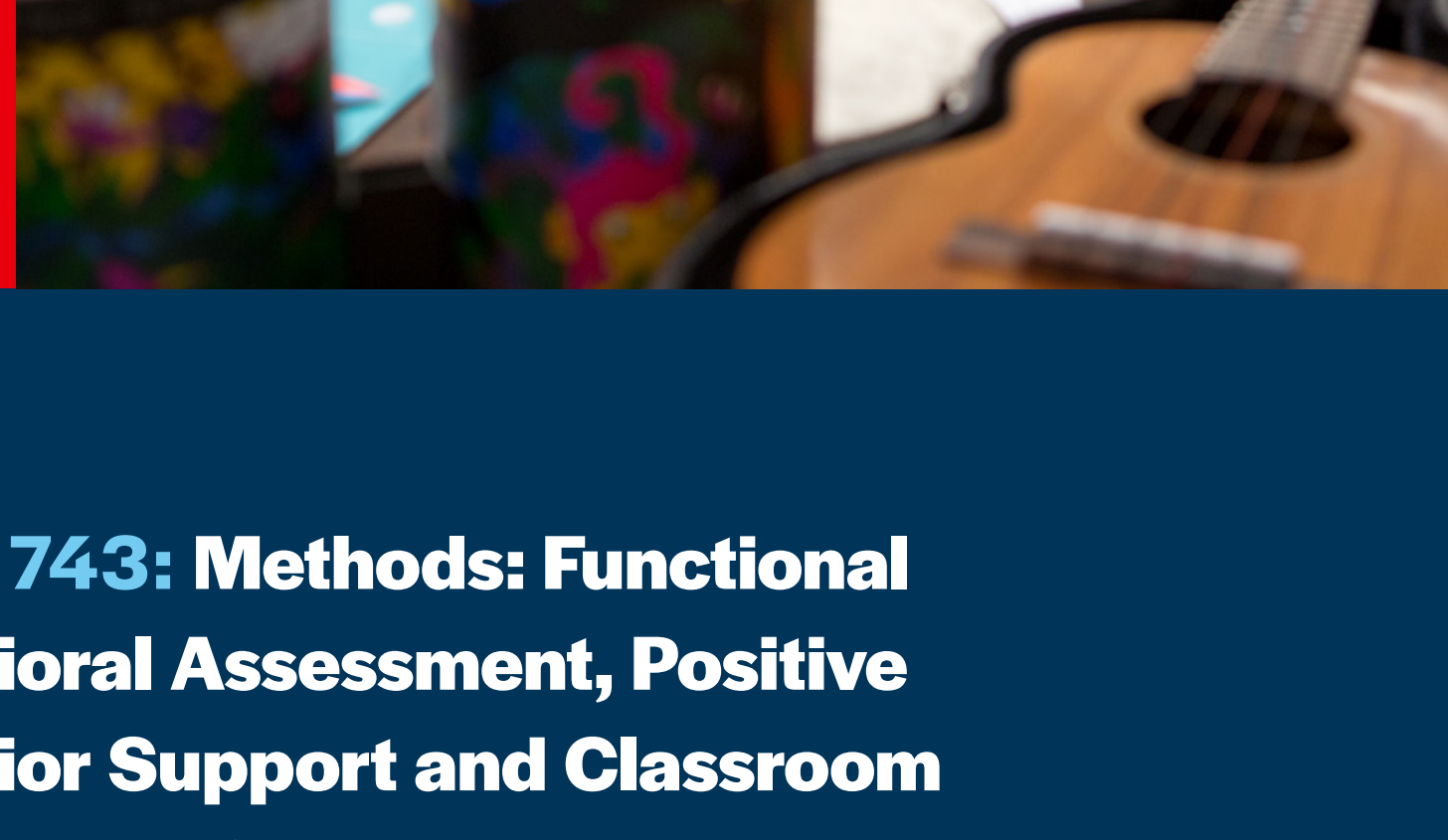


SPED 875: Practicum with Children and Youth with Disabilities

SPECIAL EDUCATION: This course is designed to provide intensive field and direct teaching experiences with children and youth with disabilities in educational, residential, and clinical settings.

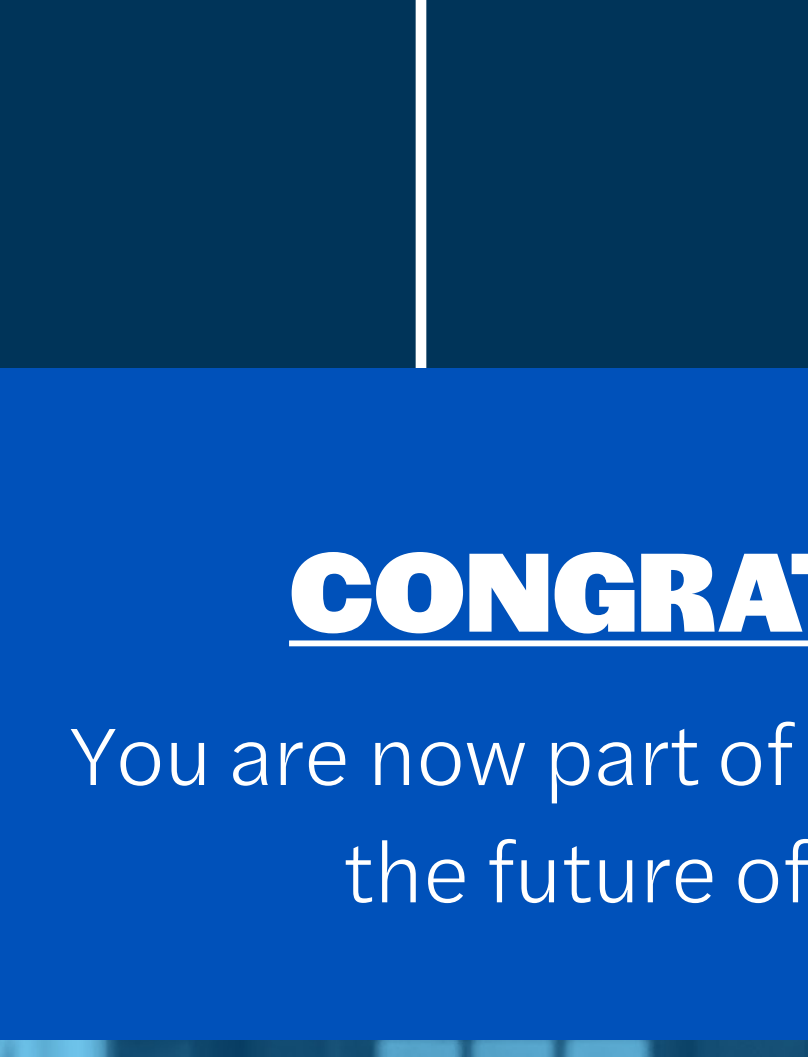
KU SOEHS: AN EVOLVING LEGACY

The KU School of Education & Human Sciences, serving students since 1909, was renamed in 2020 to better reflect its expanded academic offerings and diverse programs—ranging from exercise science and sport management to community health. This new name honors the school's ongoing commitment to education while highlighting its growth into one of the nation's leaders in educational training, human science, research, and special education.³



SPED 743: Methods: Functional Behavioral Assessment, Positive Behavior Support and Classroom Management

SPECIAL EDUCATION: This course provides a problem-solving approach and the framework for teaching and assessment strategies to develop pro-social behavior in students with disabilities and their typical peers.



SPED 898: Master's Project

SPECIAL EDUCATION: This capstone project is graded on a satisfactory progress/limited progress/no progress basis, allowing students to demonstrate mastery in a specialized area of special education.

CONGRATULATIONS GRADUATE!

You are now part of a global community of Jayhawks shaping the future of special education. **ROCK CHALK!**



*Master of Science in Education (M.S.E.) in special education with an emphasis in high incidence disabilities

Retrieved on November 7, 2024, from usnews.com/education/online-education/education/online-special-education-rankings

Retrieved on November 7, 2024, from ada.gov/resources/disability-rights-guide/#rehabilitation-act

Retrieved on November 7, 2024, from soehs.ku.edu/mission-vision/name-change