

KU THE UNIVERSITY OF KANSAS

School of Education & Human Sciences

SPRING START COURSE SEQUENCE

YOUR PATH TO SUCCESS

This course roadmap illustrates the sequence of classes for the fastest progress given a spring program start and continuous enrollment. Read more complete descriptions of the courses in the drop-down menus on the [course description page](#).



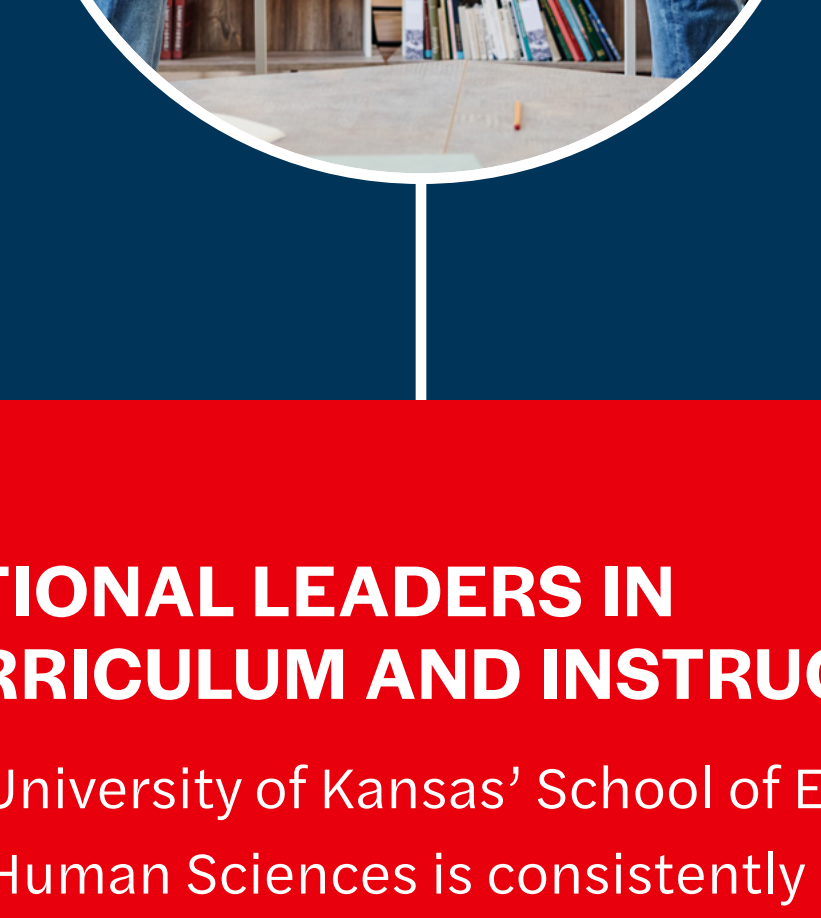
C&T 709: Foundations of Curriculum and Instruction

This course covers the basic concepts and processes of curriculum and instruction, including theories, planning models, resources for decision-making, current trends, research, and proposals for improvement of curriculum and instruction.



C&T 820: Methods of Teaching English to Speakers of Other Languages (TESOL)

This course explores the objectives and methods of ESL/Bilingual education, focusing on teaching listening, speaking, reading, and writing skills. It also examines the role of culture in language instruction and includes self-evaluation of teaching practices and materials.



C&T 821: Assessment in Teaching English to Speakers of Other Languages (TESOL)

This course covers diagnostic techniques for identifying and addressing learning challenges related to second language development in listening, speaking, reading, and writing. It includes research on assessment and error analysis in second language contexts.

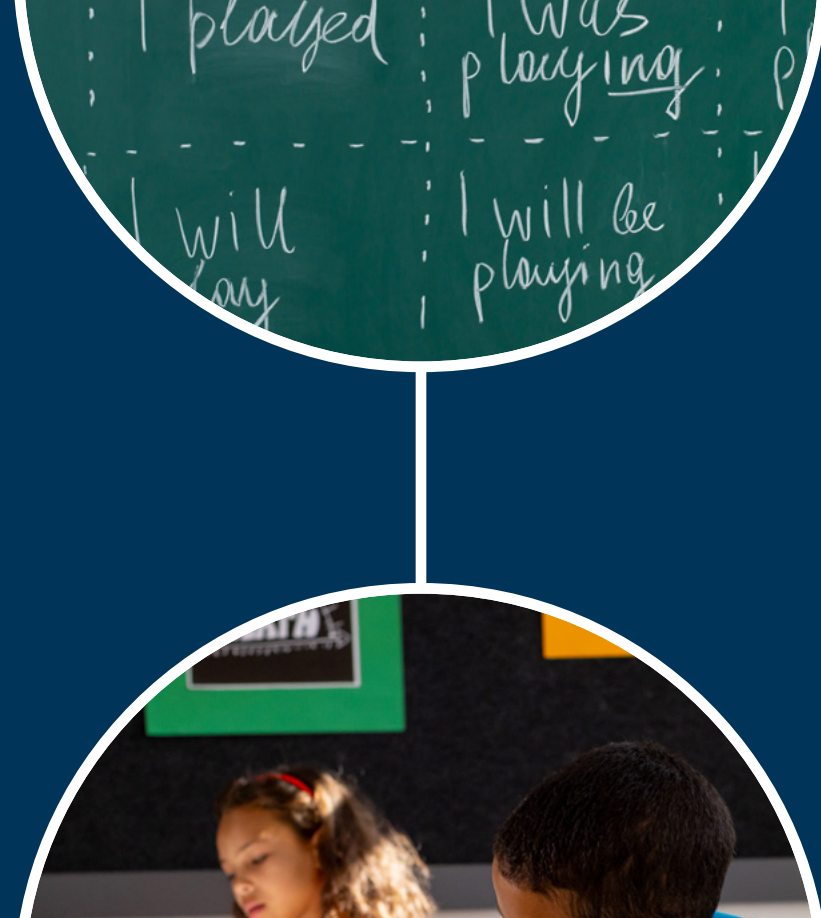
NATIONAL LEADERS IN CURRICULUM AND INSTRUCTION

The University of Kansas' School of Education and Human Sciences is consistently ranked top 20 in curriculum and instruction programs. The programs are designed to prepare students for careers in teaching, research, and leadership, offering strong connections with national educational initiatives and networks.¹



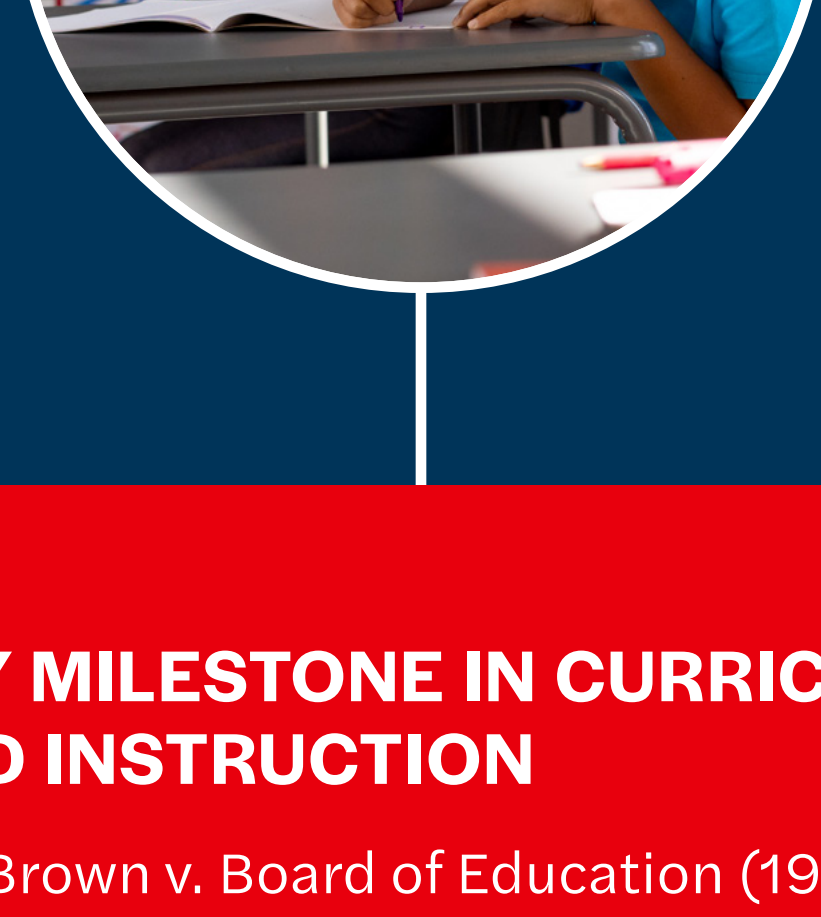
C&T 822: Second Language Acquisition for Teaching English to Speakers of Other Languages Educators (TESOL)

This course reviews theories and research in second language acquisition, exploring how trends in linguistics and psychology have influenced education. Historical and current practices in second language education are examined.



C&T 826: Linguistic Analysis for Teaching English to Speakers of Other Languages Educators (TESOL)

This course introduces pre- and in-service teachers to foundational language analysis for teaching second or foreign languages. It covers linguistic aspects like grammar, phonology, and semantics to address challenges faced by English language learners.

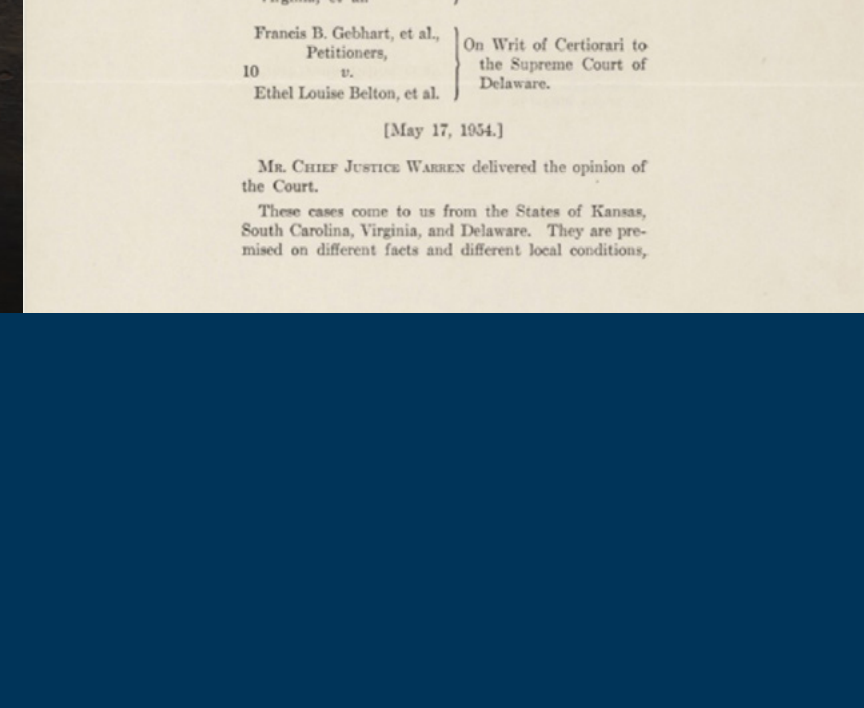


C&T 807: Multicultural Education

This course explores the impact of issues such as ethnicity, the melting pot theory, separatism, cultural pluralism, legal matters, and bilingual education on curriculum and instruction in contemporary classrooms.

KEY MILESTONE IN CURRICULUM AND INSTRUCTION

The Brown v. Board of Education (1954) decision declared racial segregation in schools unconstitutional, profoundly reshaping curriculum and instruction. This landmark case ensured that students from all racial backgrounds had equal access to educational resources in classrooms nationwide.²



TEACHER TRACK

C&T 825: Advanced Practicum in Teaching English to Speakers of Other Languages (TESOL)

This course offers a supervised teaching experience for prospective ESL/Bilingual teachers in elementary, secondary, or adult education. Emphasis is placed on lesson planning, classroom management, self-evaluation, and collaboration with school professionals.

NON-TEACHER TRACK

C&T 745: Reading and the English Language Learner

This course explores literacy development and effective teaching practices for emerging bilinguals, examining similarities and differences between first and second language literacy across reading, writing, speaking, and viewing.



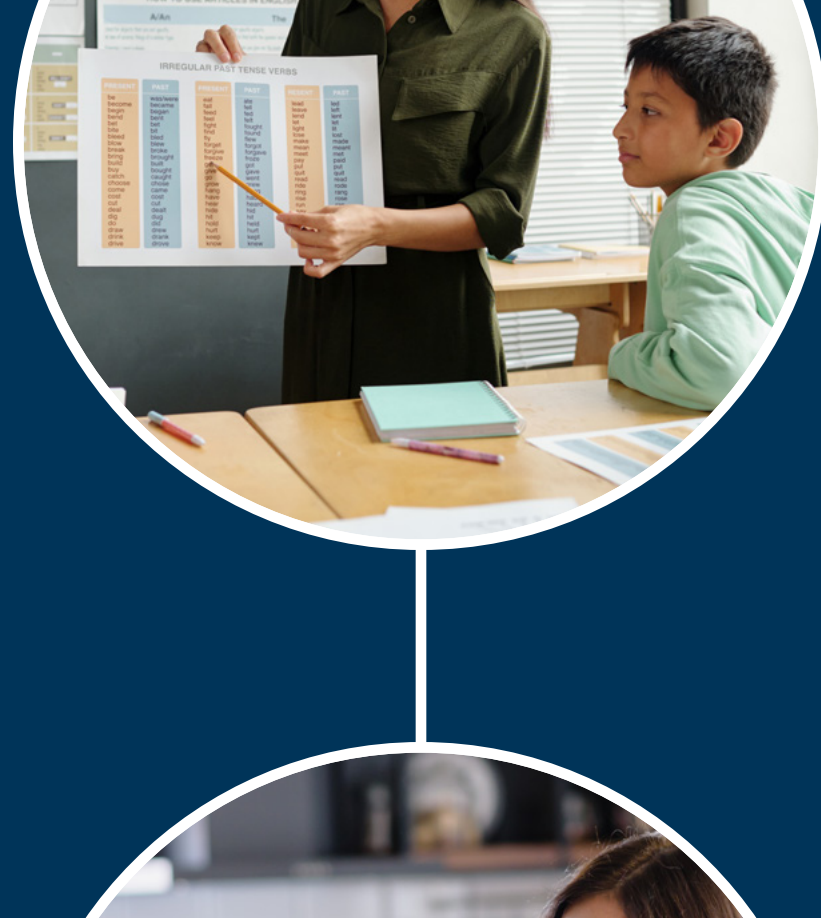
EPSY 715: Understanding Research in Education

This course introduces key concepts and skills for analyzing educational research, covering basic research methodologies such as quantitative and qualitative methods and historical and descriptive research.

PLEASE NOTE: This course fulfills the requirement of a research methods course in the first 12 hours of graduate study.

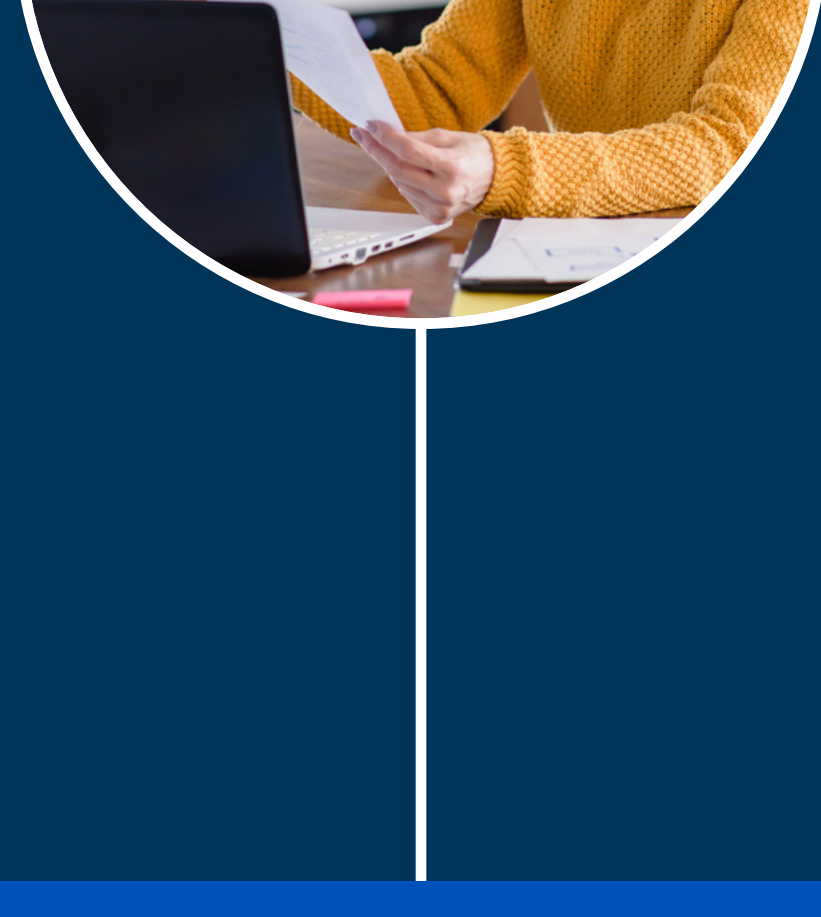
KU SOEHS: AN EVOLVING LEGACY

The KU School of Education & Human Sciences, serving students since 1909, was renamed in 2020 to better reflect its expanded academic offerings and diverse programs—ranging from exercise science and programs to community health. This new name honors the school's ongoing commitment to education while highlighting its growth into one of the nation's leaders in educational training, human science, research, and special education.³



C&T 842: Problems in Second Language Instruction

This course examines curricula and instructional strategies for second language settings, emphasizing educational research and practical problem-solving. It develops skills in locating and utilizing research sources and preparing research documents.



C&T 890: Bridging Theory to Practice: Capstone Portfolio

This capstone course allows students to reflect on their learning by creating a digital portfolio that showcases their knowledge, skills, and engagement with relevant literature and demonstrates how they can apply what they've learned in current or future contexts.

CONGRATULATIONS GRADUATE!

You are now part of a global community of Jayhawks shaping the future of special education. **ROCK CHALK!**



*Master of Science in Education degree in curriculum and instruction with an emphasis in TESOL education

1. Retrieved on November 7, 2024, from [usnews.com/education/online-education/education/online-curriculum-instruction-rankings](https://www.usnews.com/education/online-education/education/online-curriculum-instruction-rankings)

2. Retrieved on November 7, 2024, from [archives.gov/milestone-documents/brown-v-board-of-education](https://www.archives.gov/milestone-documents/brown-v-board-of-education)

3. Retrieved on November 7, 2024, from soehs.ku.edu/mission-vision/name-change